

Photocontrol - Stem Mount Thermal Photocontrol, 120 V

Item K4121C



PRODUCT DESCRIPTION

These photocontrols install on standard outdoor light fixtures and electrical boxes with 1/2"-14 NPSM thread or 7/8" knock-out holes for dusk-to-dawn ON/OFF control of outdoor lighting.

FEATURES

- ▶ Mechanical bimetal switch with Cadmium Sulfide photocell
- ▶ Delay feature prevents unwanted OFF switching
- ▶ Gray plastic housing
- ▶ 1/2"-14 NPSM threaded stem
- ▶ Washer gasket and locking nut included
- ▶ #18 AWG, 9" wire leads

APPLICATIONS

- ▶ Outdoor Lighting Control

TECHNICAL DATA

General

Model Number	K4121C
Description	Stem Mount Thermal Photocontrol, 120 V
UPC Code	078275002012
Brand	Intermatic
Country of Origin (Intermatic)	MEXICO
Warranty Period	2-Year limited
Usage Environments	Outdoor
Photocontrol Type	Thermal
Expected Lifetime (Years)	5
Expected Lifetime (Operations)	3650
Application Compatibilities	HID; Fluorescent; Incandescent
Photocontrol Style	Stem Mount
Photocontrol Sensor Location	Side

Control Specifications

Sensor Time Delay	30 sec to 90 sec
Photocell Type	Cadmium Sulfide
Photo Control Switch Type	Mechanical Bimetal
Fail Mode	ON
Activation On	1 to 5 fc
Activation Off	3 to 15 fc

Dimensions

Product Height (in)	3
Product Height (mm)	76.2
Product Width (in)	1 9/16
Product Width (mm)	39.7

Product Depth (in)	1 9/16
Product Depth (mm)	39.7
Wire Lead Length (in)	9
Wire Lead Length (mm)	228.6
Wire Size Max	#18 AWG

Material Specifications

Cover Color	Gray
Housing Material	Polycarbonate

Load Ratings

Magnetic Ballast Range(s)	8.3 A, 1000 VA
Tungsten Range(s)	15 A, 1800 W

Electrical Specifications

Wiring Option	Wire leads
Input Voltage Range(s)	120 VAC, 50/60 Hz

Packaging

Shipping Weight (lbs)	0.21
Unit Carton Dimensions (H x W x D) in	4.88 x 1.75 x 3 in

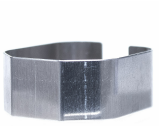
Environmental Specifications

Temperature (operation)	-40°C..70°C
-------------------------	-------------

Standards and Certifications

UL Certification	UL
CSA Certification	cCSAus
Other Certifications and Compatibilities	Title 20
UL Standard	UL773
California Proposition 65	DEHP

ACCESSORIES



22LG116
Light Guard Accessory for K4100 Series, K4200 Series Thermal Photocontrols



K42-SW-A
Swivel Arm Accessory for EK4136S, K4100 Series Stem Mount Photocontrols



6LV1352
Light Shield Accessory for EK4036S, EK4436SM, K4000 Series Button Photocontrols